

SS32VHYH		宁波市德泰机械有限公司	
设计	分区	更改文件号	签名
校对		标准化	年月日
审核			
工艺			
SS32VHYH (合金文本集)		图投标记	数量
		1	重量
			比例
		共 1 页	第 1 页

S532VHY-W Part List

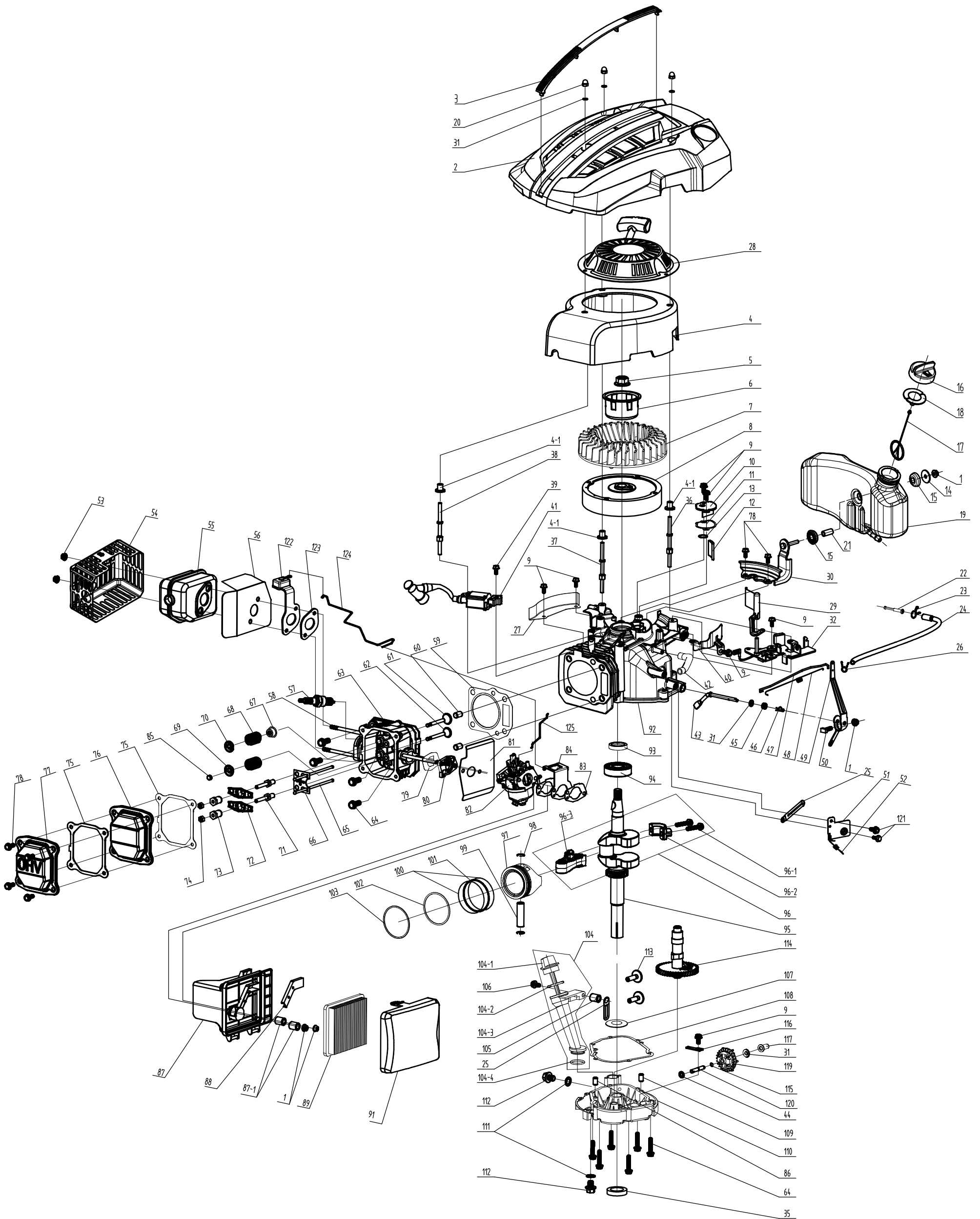
No.	Material No.	Description in English	Qty	Unit Price
1	70500620130	upper handrail	1	5,3
2	70520390130	lower handrail	1	5
3	70540084830	stop lever	1	1,9
4	70550074130	Self-propelled Lever	1	1,9
5	20340060000	foam pipe	1	0,55
6	20030030000	lever guard	1	1,1
7	60090250000	Hexagon head bolts	2	0,06
8	60150080000	Self-locking nut	2	0,05
9	70230090000	Rope Guide	1	0,7
10	60130020000	cap nut	1	0,05
11	20650170000	Brake Cable Assy plate	1	0,6
12	70780220000	selfpropelled cable	1	1,09
13	70810030000	brake cable	1	1,09
14	20580040830	quick fix knob	2	0,6
15	70220080000	quick fix handle	2	0,2
16	60300090000	lever pin	2	0,03
17	60240290000	open ring	2	0,02
18	60190040000	big flat washer	2	0,1
19	60200470000	flat washer	2	0,02
20	20040140830	small triangle knob	2	0,5
21	60140080000	Hex nut	2	0,05
22	60090240000	Hexagon head bolts	2	0,05
23	60150020000	hex self-locking nut	2	0,05
24	60090220000	Hexagon head bolts	2	0,05
25	70080250290	aluminum bracket-upper	2	3,6
26	60180130000	conical spring washer	2	0,1
27	70030850000	rotating shaft for quick lever	2	1,1
28	70220140830	aluminium quick lever	2	1,8
29	20240020000	fastener	1	0,15
30	20400140000	rear baffle	1	4,8
31	20400150000	rear baffle window	1	0,5
32	60170290000	cessed Pan head self-tappir	18	0,06
33	20380100000	rear discharge cover	1	3

34	70030830000	shaft for rear discharge cov	1	1, 1
35	60380590000	rear discharge cover spring -	1	0, 5
36	60380580000	rear discharge cover spring	1	0, 5
37	20390040000	base of rear discharge cov	1	0, 46
38	60170600000	recessed Pan head tapping	8	0, 06
39	20160190000	mulching plug	1	2, 3
40	20750210000	rubber dust proof board	1	0, 6
41	70030840000	dust proof board for shaft	1	0, 3
42	60300030000	R type pin	2	0, 02
43	70850810000	rear drive assy	1	10, 8
44	20260240000	height adjustment handle	1	0, 8
45	20550050830	spring for height adjustment ha	1	0, 2
46	60150170000	hex self-locking nut	2	0, 05
47	60060530000	hex bolt	2	0, 06
48	60200560000	big washer	2	0, 1
49	60180120000	wave form washer	4	0, 02
50	20610160000	inner cover of hub	2	0, 56
51	20880460830	wheel assy	2	6, 62
52	60150090000	hex self-locking nut	14	0, 06
53	20620290290	outer cover of hub	2	0, 56
54	70860500000	selfpropelled assy.	1	32
55	60290070000	Ratchet Wheel pin	2	0, 1
56	20430030440	rear wheel axle sleeve	2	0, 35
57	21070030000	selfpropelled ratchet washe	4	0, 04
58	70300200000	Ratchet Wheel R	1	1, 9
59	60240060000	spring washer	6	0, 04
60	70300190000	Ratchet Wheel L	1	1, 9
61	70050310000	Brake spring	1	1, 2
62	60410560000	selfpropelled spring	1	0, 08
63	70840310000	front drive assy	1	4, 8
64	20610170290	inner cover of hub	2	0, 45
65	20880470830	wheel assy	2	3, 2
66	20620300290	outer cover of hub	2	0, 45
67	60410660000	front drive spring	2	0, 2

68	70180390830	Height Adjustment Pull Rod	1	2,30
69	60240300000	blocked plate	2	0,06
70	20200300000	front face mask	1	3,5
71	20200320830	front face screwing	1	1,9
72	20200310830	grass board	1	0,86
73	20200330830	front face plate cover	1	0,3
74	70080230290	aluminum low bracket-left	1	5,2
75	70080240290	aluminum low bracket-right	1	5,2
76	20590020000	cable stopper	1	0,02
77	60370020000	"O" ring	1	0,02
78	20460010000	inlet		0,1
79	20460030000	outlet	1	0,1
80	60040160000	f round head square neck be	4	0,06
81	70742060130	deck	1	45,00
82	70060110130	Bracket plate for defelctor	1	0,5
83	60170580000	recessed Pan head tapping	2	0,06
84	70030820000	Mulch Shaft	1	0,4
85	60390250000	mulch board spring	1	0,4
86	20120110830	mulching board	1	1,10
87	20110150000	side discharge cover	1	1,50
88	60320270000	V belt	1	1,30
89	70070570130	front drive right bracket	1	0,8
90	70070560130	front drive left bracket	1	0,8
91	60040020000	f round head square neck be	4	0,06
92	70290350000	rear drive bracket	2	0,5
93	20660230000	belt cover	1	1,82
94	70150240000	square washer	2	0,1
95	60170490000	double-head bolt	2	0,08
96	60170010000	hex tapping screws	1	0,06
97	70140780000	blade adapter	1	5,9
98	70130990000	blade	1	7,20
99	70040070000	blade washer	1	0,45
100	60100020000	bolt of blade	1	0,18
101	20080100830	top of grass box	1	6,2
102	20060060000	t board of fabric grass bag	1	0,38
103	20080110000	top grass box screwing	1	0,6
104	20100100000	lower of grass box - right	1	4,5
105	20100090000	lower of grass box - left	1	4,5

106	20060070830	grass sticker board	2	0,56
107	60171930000	alum flowe self-tapping scr	6	0,05
108	A583470	T575 Engine	1	
109	60200550000	big washer	2	0,1
110	60200110000	flat washer	2	0,04
111	20650140000	control panel upper cover	1	1,2

T575 易启动汽油机定速带刹车爆炸图



						T575				宁波市德霖机械有限公司	
										易启动汽油机	
标记	处数	分区	更改文件号	签名	年月日	阶段标记	数量	重量	比例		
设计			标准化			S	1		1:5		
校对			审定								
审核											
工艺			批准							共 1 页 第 1 页 版本 A0	

T575易启动汽油机定速带刹车爆炸图

序号	物料代码	规格型号	用量	英文名称
1	60140020000	M6(镀兰白锌)GB6177.1	4	Hex flange nuts
2	25190120000	T475, PP, 黑色	1	
3	20740100060	T475, ABS, 021C	1	pull starter assy.
4	25010170000	T475, PP, 含导风罩衬套, 黑色	1	Blower Housing
4-1	75050020000	T675	3	
5	60140050000	细牙M14×1.5 (镀兰白锌) GB6177.2	1	Hex flange nuts
6	75210020000	T675	1	starter hub
7	25040020000	T675	1	fan
8	75390030000	T575	1	flywheel assy
9	60060520000	M6×12(镀兰白锌)GB/T5789	7	Bolt
10	75110010000	T575	1	Respirator Cover Plate
11	75720160000	T575	1	Respirator head gasket
12	75150010000	T475	1	oil filter net
13	75100030000	T575	1	Respirator valve plate
14	60190310000	T475 φ6.5×φ24×1.5(镀白锌)	1	
15	25310030000	T475 黑色	2	
16	25170100000	T475, HDPE,1/4卡扣, 黑色	1	fuel tank cap
17	25250080000	T475 白色	1	
18	60440330000	T475, NBR, 黑色	1	Fuel Tank Cap seal gasket
19	25180210000	T475, HDPE, 黑色	1	fuel tank body
20	60130020000	M6 (镀蓝白锌) GB/T923	3	
21	60240250000	T475 φ6.5*φ10*21白锌	1	
22	25150010000		1	
23	60230020000	T475(镀白锌)	1	fuel pipe lock clamp I
24	25160020000	335-340mm	1	fuel pipe
25	60450010000		2	clip
26	60230010000	T475(镀白锌)	1	fuel pipe lock clamp II
27	75030020000	T475	1	
28	75430100000	T475 (黑色启动拉手) -2#	1	
29	25010190000	T575, PAG+GF30, 黑色	1	
30	75330060000	T575, ST12, 白锌	1	main bracket of fuel tank
31	60200070000	6.5×15×0.5 (黑色)	5	
32	75380500000	T575易启动 (含熄火线) 增加挡风板柱	1	detent assy.
33	60060580000	M6×25(镀兰白锌)GB/T5789/8.8级	2	
34	79990850000	吉力1P70A01	1	
34-1	60060200000	小系列M5X20(镀兰白锌)	3	
34-2	75050040000	T100	1	
35	60360100000	25×38×7	1	oil seal
36	60080230000	T575	1	Different-shaped double-head bolts III
37	60080240000	T575	1	Different-shaped double-head bolts I
38	60080220000	T575	1	Different-shaped double-head bolts II
39	60060590000	M6×30(镀兰白锌)GB/T5789	1	Bolt
40	75030070000	T575锂电启动汽油机专用	1	wind shield
41	75370020000	T375	1	ignition assy.
42	25030050000	T475锂电启动, 长度140mm环保	1	waste pipe
43	75290010000	T475	1	rate-limiting rocker arm shaft
44	60200060000	6.5×12×1(镀兰白锌)	1	Gasket
45	60360080000	6×11×4	1	oil seal
46	60300040000	T475	1	R type pin
47	75160030000	T575	1	Handspike of Valve
48	60410050000	T475	1	valve spring
49	75070030000	T575 (定速款)	1	throttle rocker arm
50	60060730000	T475-T型 (M6*23)	1	bolt
51	75360010000	T675	1	throttle assy.
52	60410500000	T575定速状态 (2800转)	1	throttle control spring
53	60150100000	全金属M6(镀兰白锌)GB6187.1	2	Self-locking nut
54	75530090000	T675 (环保) 锂电启动汽油机	1	muffler cover assy.
55	75540040000	T675, Q235	1	muffler assy.
56	75740070000	T475	1	Muffler insulating pad
57	75140010000	(TORCH F7RTC)	1	spark plug
58	60080030000	M6×94(镀兰白锌)GB/T900	4	Dual-head bolts
59	75720110000	T675	1	Cylinder head gasket
60	60280020000	T475 (10*16)	2	spacing pin
61	75170020000	T675	1	IntakeValve
62	75190020000	T675	1	Exhaust Valve
63	75490030000	T575(40CR)	1	cylinder head assy.
64	60050050000	M8X50(镀兰白锌)GB/T5789	10	locking bolt
65	75350040000	原H650	2	push rod
66	75260020000	T675(1P68F)	1	push rod director plate
67	60360130000	T475	1	oil seal assy
68	60380090000	1P68F-2*20.5*33.5	2	valve spring

T575易启动汽油机定速带刹车爆炸图

序号	物料代码	规格型号	用量	英文名称
69	75180020000	T475	1	Spring Coil of Exhaust Valve
70	75180010000	T475	1	Spring Coil of Intake Valve
71	60060760000	T475(黑色)	2	valve rocker arm support bolts
72	75230010000	T475(黑色)	2	Rocker of Valve
73	60160050000	T475气门调整螺母(黑色)	2	Valve adjustment nut
74	60160030000	T475并紧螺母(黑色)	2	And nuts
75	75720070000	T475	2	Cylinder head gasket
76	75080020000	T675	1	cylinder head cover I
77	75080030000	T675	1	cylinder head cover II
78	60060530000	M6×14(镀兰白锌)GB/T5789	6	Bolt
79	75730050000	T675	1	Intake pipe paper pad I
80	25090020000	T675	1	Air Inlet Pipe
81	75730200000	T575, 抄取板	1	Intake pipe paper pad II
82	75410330000	T575, 自动阻风门	1	carburetor assy.
83	75730100000	T375/T475/T575/T675	2	Steel Gasket
84	75560040000	T575, ST12, 兰白锌	1	
85	75200010000	T475	1	Top Cover of Exhaust Valve
86	60280050000	φ9×14	1	spacing pin
87	25110090000	T475, PP, 黑色	1	air filter base assy.(II)
87-1	75050030000	T475	2	
88	25020040000	T475, PP, 黑色	1	Exhaust Gas Cover Board
89	25300020000	T475	1	Paper filter
90	30090140000	T475/T575	1	
91	25120050000	T475, PP, 黑色	1	Air Filter Upper Cover
92	75500090000	T575, ADC12, 电启动/带充电	1	crankshaft box
93	60360120000	25Xφ40X7	1	oil seal
94	60010140000	6205GB/T276	1	rolling bearing
95	75510040000	T575 (1P70AF-S3)	1	crankshaft assy.
96	75460030000	T575	1	connecting rod assy.
96-1	75460030-3		2	
96-2	75460030-2	包含于连杆体	1	
96-3	75460030-1		1	
97	75120040000	T575	1	Piston
98	60240110000	原H650	2	washer
99	60310050000	原H650 (18*54)	1	piston pin
100	75090010000	T675	2	Guide Rail
101	75000020000	T675	1	Bushing Ring
102	75130040000	T675	1	Piston Ring II
103	75130070000	T675	1	Piston Ring I
104	25200050060	T575 (含加油管、加油标尺、O型圈) 021C橙色	1	Lubricating Gauge Assy
104-1	25200050-1		1	
104-2	GB3452	包含于加油装置总成	1	
104-3	25200050-1		1	
104-4	GB3452		1	
105	25080020000	T375	1	Distance Sleeve of Lubricating Setting
106	60060630000	M6×50(镀兰白锌)GB/T5789	1	Bolt
107	60200180000	φ25.5×φ36×1.0	1	clockwise gear gasket
108	75720040000	T575	1	Joint box packing
109	60280030000	φ8×14	1	spacing pin
110	75240040000	T575	1	Crank box cover
111	60200150000	φ10.5×φ16×1.5(铝制Al)	2	Oil drain bolt gasket
112	60060780000	M10×1.25×15(镀兰白锌)GB/T16674	2	Oil drain bolt
113	75250020000	T575	2	pin
114	75470030000	T575	1	camshaft assy.
115	60400010000	T475	1	Gear Shaft circlip
116	75280010000	T475	1	rate-limiting gear shaft
117	25070010000	T475(自然色)	1	Sliding Sleeve
118	60200070000	6.5×15×0.5 (黑色)	1	Gasket
119	75520020000	T475	1	rete-limiting gear assy.
120	75270030000	T375	1	rate-limiting gear shaft
121	60060510000	M6×10(镀兰白锌)GB/T5789	2	Bolt
122	30070140000	T475, 70 全开	1	
123	75740060000	T475, 单面冲齿石墨板	1	
124	75760100000	T575, 不锈钢丝, 长234	1	
125	75760120000	T575, 不锈钢丝, 长89	1	

编制:

校对:

审核: